

MSc Temporary Works and Construction Method Engineering

City, University of London

This MSc degree, now in its second year, provides a specialist qualification for those involved in the design and construction of temporary works. It is accredited by the Joint Board of Moderators (The Institution of Civil Engineers, the Institution of Structural Engineers, the Chartered Institution of Highways and Transportation and the Institute of Highways Engineers). Many of the industry's top experts in the field lecture on the MSc alongside world leading academics from City, University of London.

Entry Requirements:

2:1 honours degree in Civil Engineering or a relevant subject. Alternative qualifications combined with relevant experience may also be considered.

Course Fees:

Full-time UK/EU: £12,000

Part-time UK/EU: £6,000 per year

Full-time Non-EU: £16,500

Part-time Non-EU: £8,250 per year

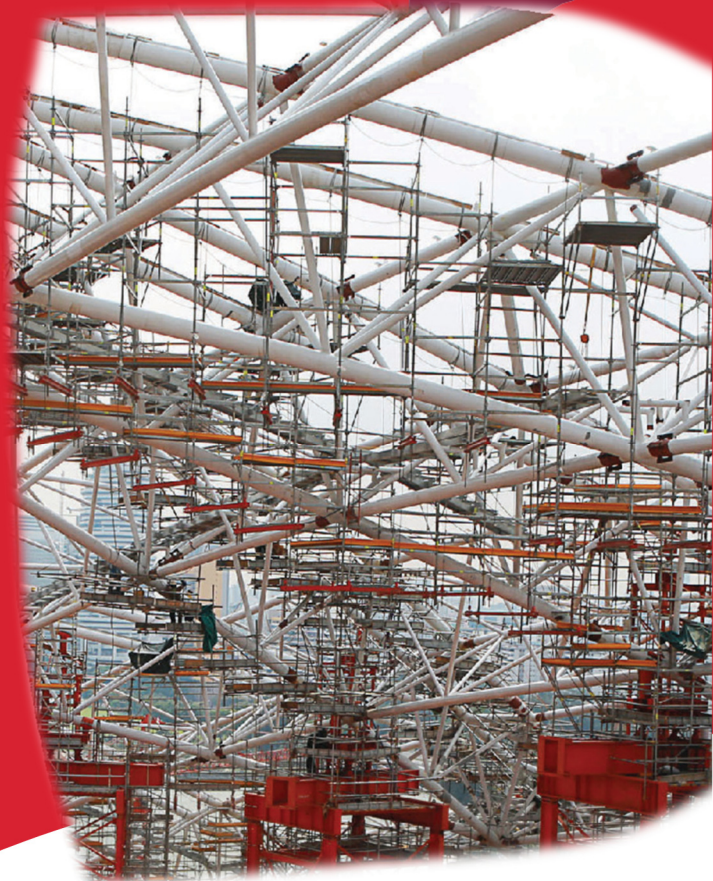
Andrew McNamara, Director
Temporary Works Forum (TWf) Centre of
Excellence in Temporary Works and
Construction Method Engineering

City University London,
Northampton Square, London, EC1V 0HB

T: +44 (0)20 7040 8149

M: +44 (0)79 7661 0662

www.city.ac.uk



Promoting best practice in the construction industry

The TWf was established in 2009 to:

- provide a forum for reasoned debate
- arrange seminars and meetings for opinion formers and experts
- provide and contribute to education and guidance material in temporary works
- seek a close working relationship with other groups
- influence industry and others.

Membership enquiries are welcome.

Contact the TWf Secretary at

secretary@twforum.org.uk

www.twforum.org.uk



Part- time Course Scheme:

| Year 1 - Autumn term | Year - 1 Spring term |
|---|---|
| Introduction to Temporary Works | Geotechnical Temporary Works |
| Temporary Works Structures 1 | Temporary Works Structures 2 |
| Year 2 - Autumn term | Year 2 - Spring term |
| Temporary Works for Marine Construction | Groundwater control |
| Temporary Works for Plant and Access | Temporary Works for Demolition and Alteration |

The dissertation module takes place between the end of the May examination period and the middle of September of the second year.

Full-time Course Scheme:

| Autumn term | Spring term |
|---|---|
| Introduction to Temporary Works | Geotechnical Temporary Works |
| Temporary Works Structures 1 | Temporary Works Structures 2 |
| Temporary Works for Marine Construction | Groundwater control |
| Temporary Works for Plant and Access | Temporary Works for Demolition and Alteration |

The dissertation module takes place between the end of the May examination period and the middle of September.

External contributors to the course:

| | | | |
|-----------------------|--------------------------------|-----------------|------------------------------|
| Ivik Masek | 48.3 Scaffold Design | Tim Bownes | Milford Haven Port Authority |
| Steve McKechnie | Arup | Stephen Thomas | OGI Ltd |
| Andrew Smith | Coffey Geotechnics | Mark Blackmore | RKD Consultant Ltd |
| Stewart Carolan-Evans | Costain | Andrew Jones | RMD Kwikform |
| Neil Phillips | COWI | Cliff Ohl | Royal Haskoning DHV |
| Julian Howe | Crouch Waterfall | Panos Spridis | Ruler Consult |
| Stefan Jefferis | Environmental Geotechnics Ltd | Rohit Gorasia | Skanska Building |
| Mike Appleby | Fisher Scoggins Waters | Simon Ellis | Skanska UK |
| David Puller | Geotechnical Experts Ltd | Rob Millard | Swanton |
| Nic Hutchinson | HTC | William Powrie | University of Southampton |
| Bernard Holman | HTC | Tim Lohmann | Wentworth House Partnership |
| John Barber | King's College London | Stuart Marchand | Wentworth House Partnership |
| Gordon Deuce | MACE | Toby Roberts | WJ Groundwater |
| Steve Hesketh | MGF Excavation Support Systems | Gary Holmes | WJ Groundwater |